



ANR Monthly Customer Update

March 2022



TC Energy

Agenda

1. Safety moment & TC Energy update

DeAnna Parsell, Noms & Scheduling

2. Storage update

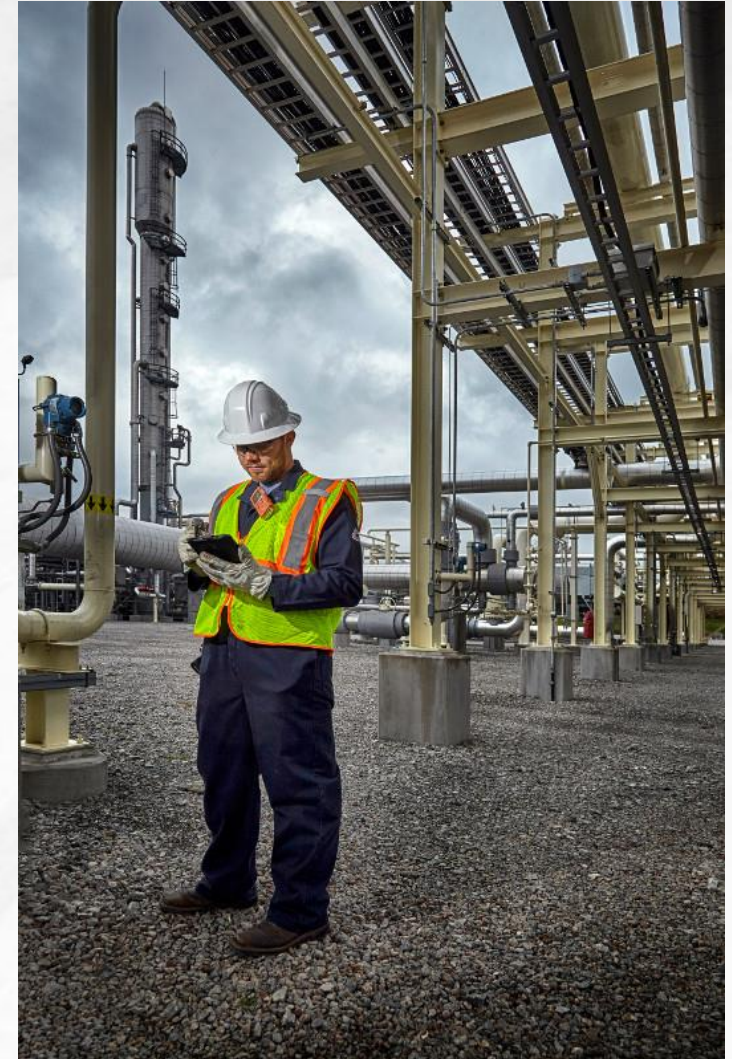
Eric Tawney, Operations Planning

3. Operational update

Kevin Pham, Operations Planning

4. Noms & Scheduling update

DeAnna Parsell, Noms & Scheduling





Safety Moment

LADDER SAFETY

DO'S

ONLY USE A LADDER OR STEPLADDER:

- After you have inspected it
- In a safe environment free or clutter
- At a firm level base
- If you can lean at approximately 75° from horizontal
- Where you can maintain 3 points of contact (hands or feet)
- Stay near the middle of the ladder



DONT'S

ON A LADDER OR STEPLADDER DO NOT:

- Extend ladders while standing on rungs
- Overload it or carry loads on ladders
- Overreach
- Allow more than one person at one time
- Stand ladders on moveable objects or uneven ground
- Use the top two steps on either a ladder or a stepladder



“We continue to advance and innovate our cybersecurity strategy to protect our data, systems and assets, and we closely monitor our environments for anything suspicious and regularly plan, practice and prepare for potential scenarios. Our SCADA systems are protected and tested rigorously as part of our overall cybersecurity approach. All assets are firewalled from the greater connection of the internet, and that system is tested regularly for penetration points by third-parties.”

Chris Foster

TC Energy Chief Innovation Officer

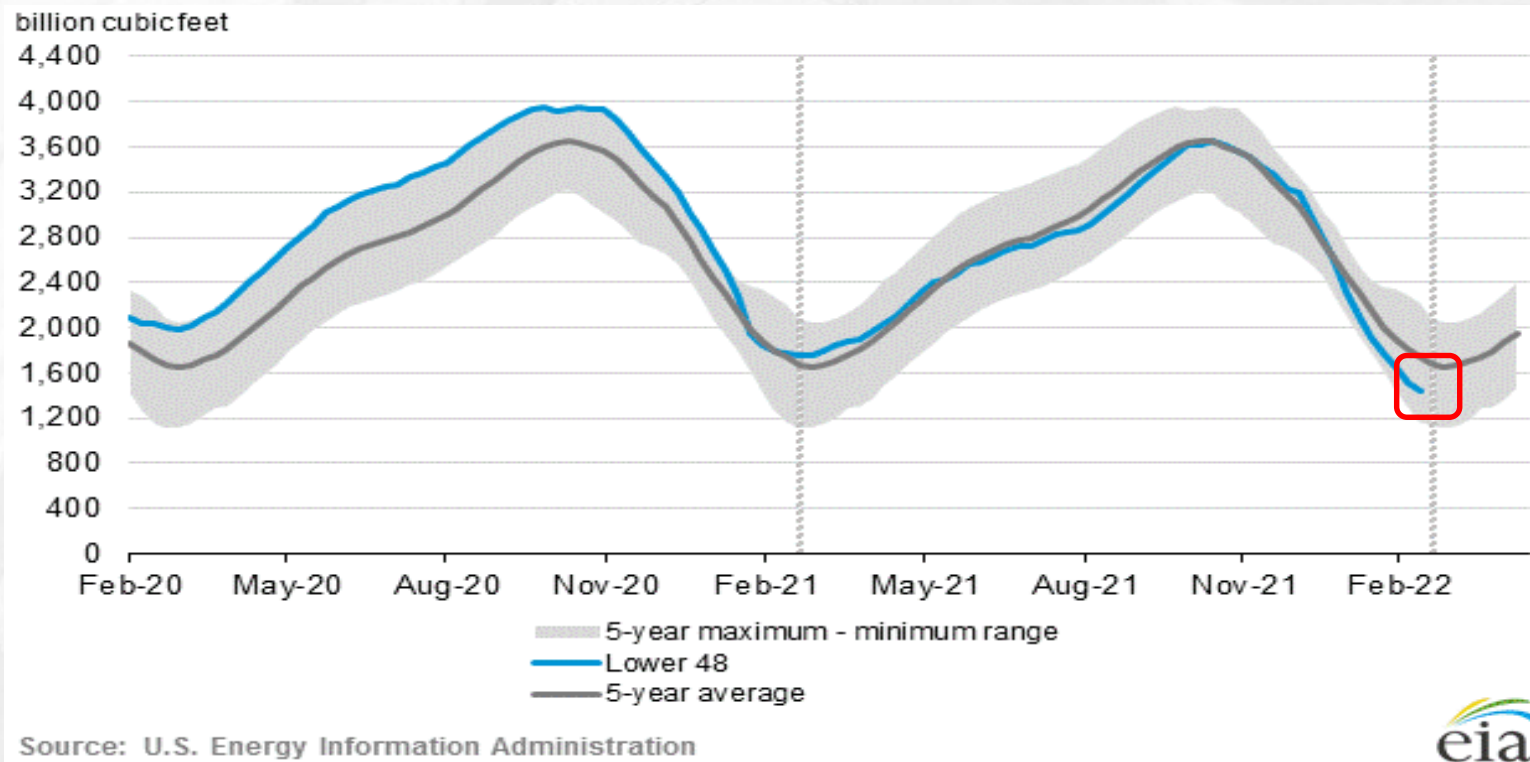


Storage update

Eric Tawney – Operations Planning

EIA storage position: The big picture

Working gas in underground storage compared with the five-year maximum and minimum



344
bcf

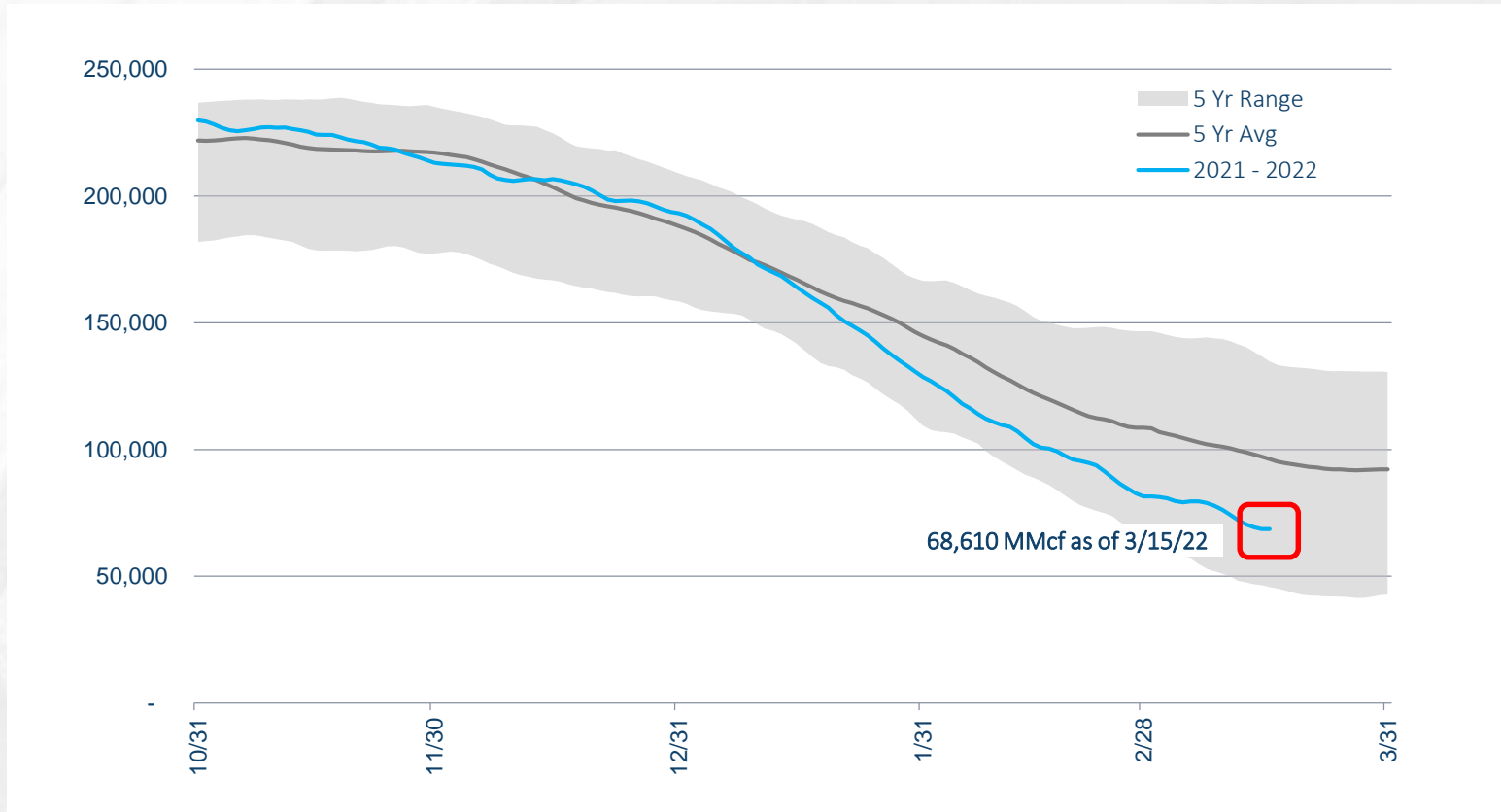
less than March 2021

304
bcf

*below the
five-year average*

Storage position

Working gas in underground storage compared with the five-year maximum and minimum



35
bcf

less than March 2021

28
bcf

*below the
five-year average*


Storage operations

- From Wednesday, Feb. 15 – Tuesday, March 15, storage activity averaged a withdrawal rate of 1.15-Bcf/d. Daily activity varied from an injection rate of 338-MMcf/d down to a maximum withdrawal rate of 2.55-Bcf/d.
- Storage capacity is 27 percent full.
- ANR has met all firm customer demand for storage activity.
- There are currently no postings restricting storage activity and no planned restrictions on DDS capacity.



Storage operations

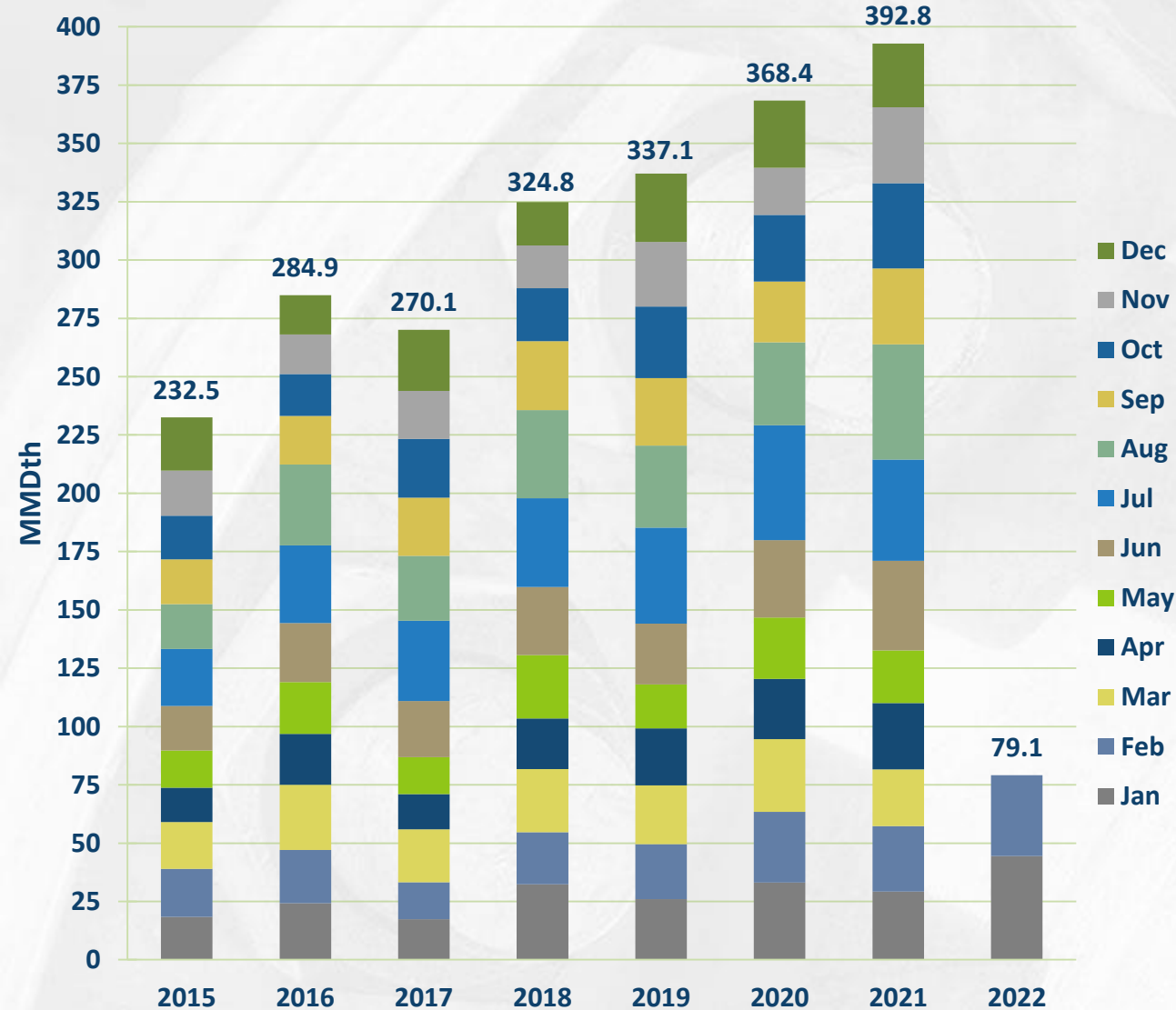
- Storage activity is primarily on withdrawal, but injections are still possible under certain conditions. The possibility of injections will increase as we move into April.
- ANR has begun its spring storage field shut-ins to set the fields up for injection. ANR will ensure sufficient withdrawal capacity is maintained to meet firm withdrawal demand.
 - When needed, sufficient injection capacity will be available to meet anticipated demand
- The available capacity will continue to be reflected on the EBB under the operationally available capacity



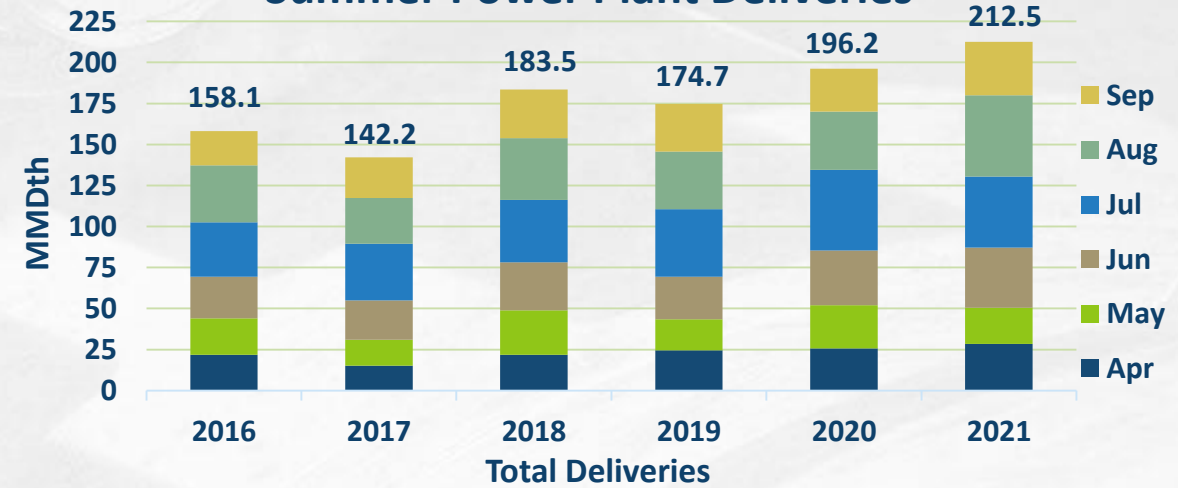
Operational update
Kevin Pham – Operations Planning

Monthly deliveries to Power Plants

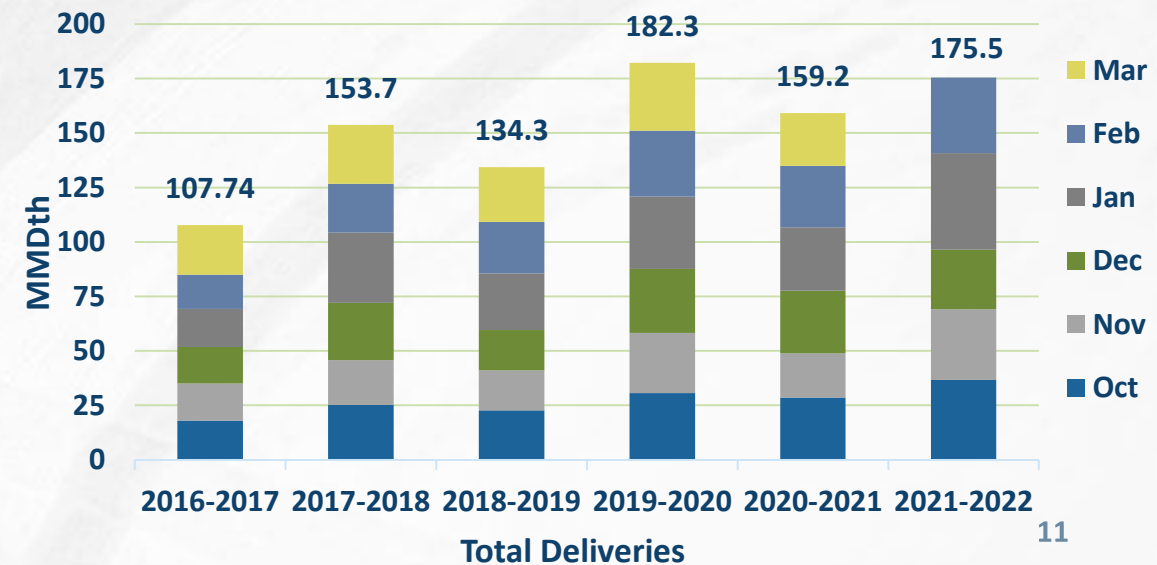
Total Monthly Power Plant Deliveries



Summer Power Plant Deliveries



Winter Power Plant Deliveries



Capacity impacts (SW Mainline & Area)

		Cap (MMcf/d)		March							April																																			
Dates	Area/Segment/Location	Impact	Avail																																											
Southwest Area & Mainline				23	24	25	26	27	28	29	30	31	1	2	3	4	5	6	7	8	9	10	11	12	13	14	15	16	17	18	19	20	21	22	23	24	25	26	27	28	29	30				
SWML Northbound (LOC # 226630)																																														
12/11 - TBD	Havensville CS Automation Upgrades	100	618																																											
3/29 - 4/11	Line 1-100 Enterprise to Havensville ILL	140	550																																											
4/8 - 4/28	Greensburg CS Automation Upgrades	180	510																																											

Capacity impacts (Northern Area)

		Cap (MMcf/d)		March							April																																				
Dates	Area/Segment/Location	Impact	Avail																																												
Market Area & Storage				23	24	25	26	27	28	29	30	31	1	2	3	4	5	6	7	8	9	10	11	12	13	14	15	16	17	18	19	20	21	22	23	24	25	26	27	28	29	30					
Marshfield/Viking Int - Receipt (#28873)																																															
4/1 - 4/23	Marshfield CS - Automation & Controls Upgrades	FPO	Shut-in																																												

Capacity impacts (SE Area)

		Cap (MMcf/d)		March							April																															
Dates	Area/Segment/Location	Impact	Avail																																							
Southeast Area				23	24	25	26	27	28	29	30	31	1	2	3	4	5	6	7	8	9	10	11	12	13	14	15	16	17	18	19	20	21	22	23	24	25	26	27	28	29	30
Stingray Int (LOC #135819)																																										
8/20 - 12/31/22	Pipeline - Integrity Issue / Hurricane Laura Damage	N/A	Shut In																																							
Multiple Meters - Cameron Area																																										
10/20 - 12/31/22	Meter Station - Hurricane Laura Damage	N/A	Shut In																																							
Shadyside/TGP Rec (LOC #467239)																																										
1/6 - 3/31	Meter Equipment Issue	N/A	Shut In																																							
Shadyside/TGP Del (LOC #467240)																																										
1/6 - 3/31	Meter Equipment Issue	N/A	Shut In																																							

Outage postings

- Service impacts are estimates. Actual nominations, markets, weather and pipeline conditions determine any level of curtailments.
- Projects may be added, altered, delayed or cancelled. Emergent work cannot be planned and will happen from time to time.
- Notice of such planned work, including additions or changes, will be provided via a posting under the Planned Service Outage (PSO) category in GEMS. Emergent work will be posted under the Critical Notice category as soon as possible.





Nominations & Scheduling update
DeAnna Parsell – Noms and Scheduling

Imbalance Trades

- Trades are entered in “Imbalance Trading - Imbalance Trading Maintenance”
- Shippers can view posted imbalances available in “Imbalance Trading – Imbalance Trading Postings” **OR** on anrpl.com under “Informational Postings – Posted Imbalances”
 - Ability to see contact information is available here
- Both parties must confirm trade
- Once both parties confirm, the trade cannot be reversed/edited/deleted
 - Approved trades process immediately
- Imbalances must be from the same operating area
- Imbalances can only be entered to reduce the imbalance
- Trade window opens on the ninth workday
- Trade window closes on the 17th workday

Reminder: Storage Cycling Fuel

- Cycling Fuel Assessment applies on Rate Schedules FSS and STS as indicated in ANRPL's Tariff under Part 5.12.3 Paragraph 7 and Part 5.2.3 Paragraph 6.
- The quantity of Gas equal to Transporter's Use (%) times the quantity of Working Storage Gas in excess of 20 percent of Shipper's MSQ at the end of the winter period.
- Cycling Fuel rate will equal the April 1 rate of the current calendar year. The Cycling Fuel quantities will be assessed from the shipper's applicable storage account.

Seasonal reminders

- FSS customers with contracts expiring effective gas day Thursday, March 31, 2022, will need to transfer the ending balance from the terminating contract to another contract effective gas day Friday, April 1, 2022. Customers can submit Infield Storage Transfers in Gems for gas day Friday, April 1, 2022, prior to 9 a.m. CST on Saturday, April 2, 2022.
- Annual updated transporter's use (%) - April 2022
 - Approved and loaded in GEMS for April 1 nominations

ANR customer assistance

For customer assistance concerning scheduling priorities, firm service rights and features, GEMS new user training, virtual and face-to-face meetings, etc., please contact the ANR Noms & Scheduling Team:

Toll Free: 1-800-827-5267

Group Email: ANR_Noms_Scheduling@tcenergy.com

Web address for the ANRPL Tariff: ebb.anrpl.com

